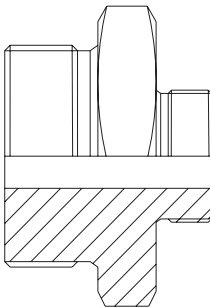
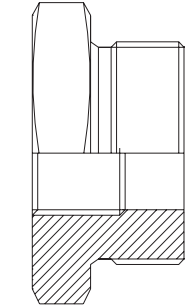


Accumulator Fittings

BSPP BUSHES & NIPPLES



- All fittings are zinc sealed and supplied with a nitrile bonded seal to suit the accumulator fluid port recess
- Standard BSPP fittings shown below to suit standard oil and low corrosive applications
- Stainless steel fittings available
- Other fittings available upon request

REDUCING BUSHES

part number	accumulator series	connection to accumulator	available female thread
50038-V10	(4 litre)	G1¼	G½
50040-V10	(4 litre)	G1¼	G¾
50042-V10	AC/NG	G2	G½
50043-V10	AC/NG	G2	G¾
50044-V10	AC/NG	G2	G1
50045-V10	AC/NG	G2	G1¼
50046-V10	AC/NG	G2	G1½

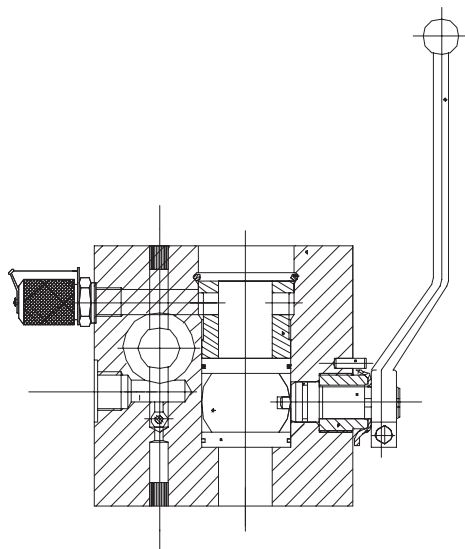
NIPPLES

part number	accumulator series	connection to accumulator	available male thread
50716-V10	(0F to 2.5 litre)	G¾	G½
50053-V10	(0F to 2.5 litre)	G¾	G¾
50712-V10	(4 litre)	G1¼	G¾
50722-V10	(4 litre)	G1¼	G1
50719-V10	(4 litre)	G1¼	G1¼
50714-V10	AC/NG	G2	G1¼
50056-V10	AC/NG	G2	G2

Safety Blocks

DI SERIES

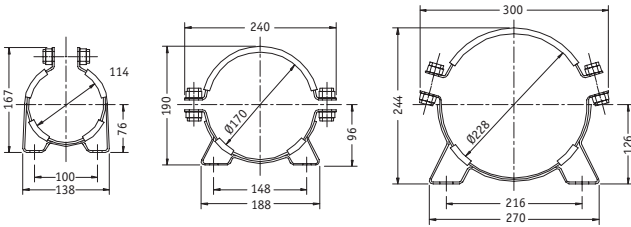
- Constructed from hi-tensile steel
- Provides manual isolation (ball valve) of the accumulator from the circuit
- Adjustable pressure relief valve. Factory set at 330 bar
- Manual needle valve for fluid dump to tank
- CETOP connection to circuit. BSPP male flange adaptor on accumulator side
- "Minimes" connection supplied for sampling or pressure monitoring equipment
- Optional flow limiter block for controlled accumulator discharge
- Safety blocks are also available fitted with an electric dump valve (AC/DC). Price on applications.



part number	description	bore (mm)	isolation	accumulator connection	recommended series
351.288-11902	DI 16MS 1.330 AV	16	manual	G1" ¹ / ₄	AC (4 to 9litre)
351.288-13902	DI 16MS 3.330 AV	16	manual	G2"	NG (10 to 57 litre)
351.290-13902	DI 24MS 3.330 AV	24	manual	G2"	NG (10 to 57 litre)

Clamps & Brackets

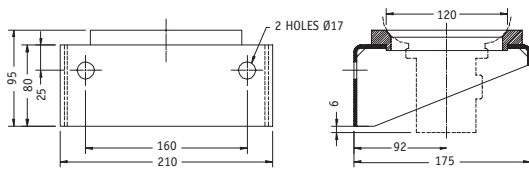
SADDLE CLAMPS



- Saddle clamps manufactured from mild steel with external zinc plated finish
- Rubber strips are made from nitrile

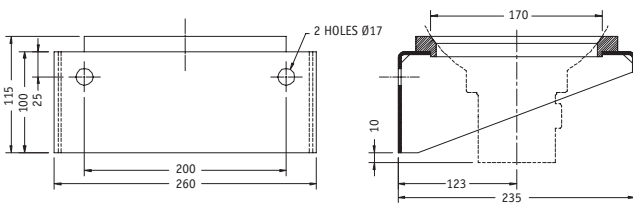
saddle clamps	part number	superseded equivalent
AC (1 to 3 litre)	20057004725	10958
AC (4 litre)	20126704725	10959
NG, AC (10 to 57 litre)	20057104725	10960

SUPPORT BRACKETS



4 LITRE

- Support brackets manufactured from mild steel with external zinc plated finish
- Cushion rings made from nitrile



10-57 LITRE

support brackets	part number	superseded equivalent
AC (4 litre)	20118704750	10962
NG, AC (10 to 57 litre)	20109004750	10961

Gas Charging Equipment

UNIVERSAL CHARGING KIT

- The universal charging kit allows the charging of a wide variety of accumulators. Adaptors supplied in the kit suit US or European style gas valves as well as the OFC standard ranges
- The charging kit includes a bull nose adaptor for connecting directly to high pressure nitrogen cylinders. However, please note that OLAER recommend the use of a nitrogen regulator (readily available from your gas supplier) to prevent damage to the bladder during charging
- The permanently mounted gauging/charging head allows precharge pressure monitoring (when the accumulator is isolated from system pressure & bled). The UCK is still required for initial precharging as well as precharge maintenance



part number	description
105CK-03	universal charging kit with 0 to 1000 kPa gauge
105CK-04	universal charging kit with 0 to 2500 kPa gauge
105CK-05	universal charging kit with 0 to 4000 kPa gauge
105CK-06	universal charging kit with 0 to 6000 kPa gauge
105CK-07	universal charging kit with 0 to 10000 kPa gauge
105CK-08	universal charging kit with 0 to 16000 kPa gauge
105CK-10	universal charging kit with 0 to 25000 kPa gauge
105CK-12	universal charging kit with 0 to 40000 kPa gauge

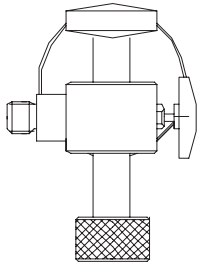
part number	description	quantity/kit
	portable attache case	1
	charging head	1
1614**	gauge fitted to charging head with required pressure scale	1
50094-099	nitrogen cylinder adaptor	1
50096-099	2 metre charging hose c/w G $\frac{1}{4}$ swivel connectors	1
10712	charging adaptor to suit 0.302 x 32 TPI (US style) gas valve	1
10709	charging adaptor to suit 5/8" UNF (european style) gas valve)	1
50113	gas valve core extractor	1
43274-099	high pressure 690 bar gas valve core	3
10053-S03	gas valve assembly as found on AC & NG series accumulators	1

PERMANENT CHARGING HEADS

part number	accumulator series
10570-**IC	AC (0.6 to 2.5 litre)
10570-**	AC (4 to 57 litre)
10570-**NG	NG

Gas Charging Accessories & Spares

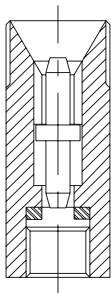
CHARGING HEAD



- Charging head/adaptor for precharging nitroball accumulators. (M28x1.5 connection) for use with universal charging kit

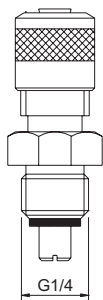
part number	description
202.146-00233	OLM charging head for precharging nitroball accumulators (M28x1.5 connection) for use with universal charging kit

GAS CHARGING ADAPTOR



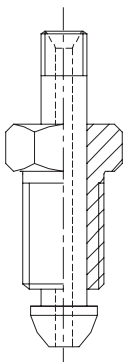
part number	connection to charging head	connection to gas valve
10709	G $\frac{1}{4}$ male	5/8"UNF female
10712	G $\frac{1}{4}$ male	0.302 x 32 TPI female
10703	0.302 x 32 TPI male	G $\frac{1}{4}$ female

GAS VALVE ASSEMBLY



part number	accumulator series	connection to accumulator	connection to charging head
10030-S03		$\frac{1}{4}$ BSPT	G $\frac{1}{4}$ male
10031-S03	HC	G $\frac{1}{4}$ (O-ring)	G $\frac{1}{4}$ male
10052-S03	AC (4 to 57 litre), NG	G $\frac{1}{4}$ male	0.302" x 32 TPI
10053-S03	AC (4 to 57 litre), NG	G $\frac{1}{4}$ male	G $\frac{1}{4}$ male
43274-099	AC (0.6 to 3 litre)	high pressure 690 bar	gas valve core

CYLINDER ADAPTORS



part number	accumulator series
50094-099	nitrogen cylinder adaptor (5/8" to G $\frac{1}{4}$)
50096-096	$\frac{1}{4}$ " high pressure nitrogen charging hose (to suit charging kit)