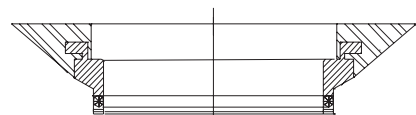


# Accumulator Components

## ANTI EXTRUSION RING ASSEMBLIES

- Anti extrusion ring (AER) assembly includes the moulded anti extrusion ring with split ring, fluid port (or top plug) O-ring and back-up ring & bleed plug bonded seal for 4 to 57 litre
- Oil service AER supplied standard in nitrile carbon steel split ring. Water service AER incorporates a stainless steel split ring



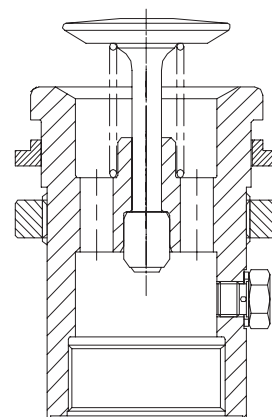
NB : AER assembly is included in bladder kits

S/S nitrile 25    C/S nitrile 25    S/S butyl 40    S/S EPDM 47    S/S FPM 80

part number	size (litres)	accumulator series
OF0**-00	0.6-2.5	AC
040**-00	4	AC
100**-00	10-50	NG, AC

## FLUID PORT ASSEMBLIES

- Oil service fluid port assemblies are made from high tensile alloy steels. Water service are full stainless steel construction
- All ports have BSPF female connections (as shown) with optional SAE 1 1/2 code 62 or 2" code 61 flange necks
- Assemblies supplied complete with flanged washer and locking ring. Bleed plug also supplied on 4 to 57 litre assemblies
- Other special options are available upon request



oil service carbon steel	gas volume (litres)	accumulator connection	water service stainless steel
OF***-00	0.6 to 2.5	3/4" BSPF	0F***-02
03***-00	3	1" BSPF	03***-02
04***-00	4 to 9	1 1/4" BSPF	04***-02
NG10***-00	10 to 57	2" BSPF	NG10***-02
NG10***-30	10 to 57	1 1/2" SAE	N/A

top plug carbon steel	gas volume (litres)	accumulator series	top plug stainless steel
NG10TOP-00	10 to 57	NG	NG10TOP-02