

Piston

AK SERIES

- Pressure rating to AD Merkblatt/CE calculations
- Available with AS 1210 or BS 5500 approval
- Standard configuration for use with back-up bottles (no gas valve)
- Special designs available up to 1500 litre

AK 06-220-18

Piston accumulator

Oil capacity

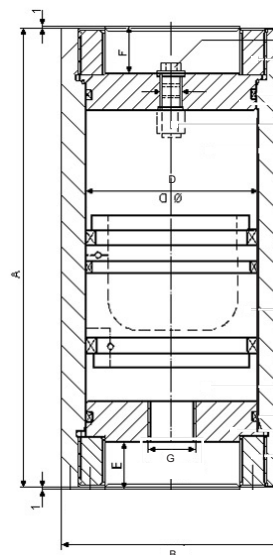
in litres eg. 06 = 6 litres

Design pressure

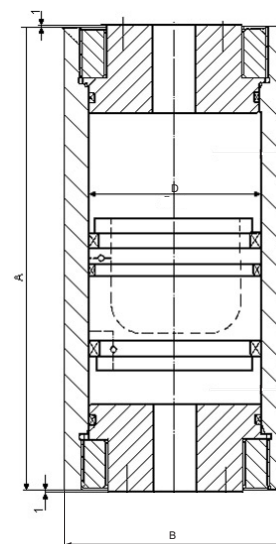
Piston diameter

10 - 100 mm 25 - 250 mm
18 - 180 mm 36 - 360 mm

STANDARD CONFIGURATION



SPECIAL FLANGE DESIGN



STAINLESS STEEL VERY HIGH PRESSURE Ø 180

part number	weight (kg)	A	ØB	G
AK 06-700-18	136	575	250	G1½"
AK 08-700-18	149	655	250	G1½"
AK 10-700-18	161	735	250	G1½"
AK 15-700-18	192	930	250	G1½"
AK 20-700-18	223	1130	250	G1½"
AK 25-700-18	253	1325	250	G1½"
AK 30-700-18	284	1520	250	G1½"
AK 40-700-18	345	1915	250	G1½"
AK 50-700-18	395	2305	250	G1½"
AK 60-700-18	468	2700	250	G1½"
AK 70-700-18	529	3095	250	G1½"
AK 80-700-18	591	3485	250	G1½"

gas non-return valve

flange design -10

-18

-25

-36

other flange configurations

BS 5500 approval

Piston

BORE Ø 100 & Ø 180

part number	weight (kg)	A	ØB	G	part number	weight (kg)	A	ØB	G
AK 01-220-10	17	310	120	G1"	AK 01-375-10	25	370	125	G1"
AK 02-220-10	20	435	120	G1"	AK 02-375-10	29	495	125	G1"
AK 03-220-10	24	560	120	G1"	AK 03-375-10	33	620	125	G1"
AK 04-220-10	27	690	120	G1"	AK 04-375-10	38	750	125	G1"
AK 05-220-10	31	816	120	G1"	AK 05-375-10	42	875	125	G1"
AK 06-220-10	34	945	120	G1"	AK 06-375-10	47	1005	125	G1"
AK 06-220-18	57	505	207	G1½"	AK 06-375-18	82	560	217	G1"
AK 08-220-18	63	585	207	G1½"	AK 08-375-18	89	640	217	G1½"
AK 10-220-18	68	665	207	G1½"	AK 10-375-18	97	720	217	G1½"
AK 20-220-18	92	1055	207	G1½"	AK 20-375-18	132	1110	217	G1½"
AK 30-220-18	118	1450	207	G1½"	AK 30-375-18	168	1505	217	G1½"
AK 40-220-18	141	1840	207	G1½"	AK 40-375-18	194	1895	217	G1½"
AK 50-220-18	168	2235	207	G1½"	AK 50-375-18	239	2290	217	G1½"
AK 60-220-18	194	2625	207	G1½"	AK 60-375-18	275	2685	217	G1½"
AK 70-220-18	220	3015	207	G1½"	AK 70-375-18	311	3080	217	G1½"
AK 80-220-18	244	3415	207	G1½"	AK 80-375-18	346	3470	217	G1½"
AK 01-800-10	55	390	170	G1"	AK 08-600-18	168	690	250	G1½"
AK 02-800-10	70	515	170	G1"	AK 10-600-18	153	769	250	G1½"
AK 03-800-10	84	650	170	G1"	AK 20-600-18	256	1162	250	G1½"
AK 04-800-10	99	770	170	G1"	AK 30-600-18	331	1556	250	G1½"
AK 05-800-10	114	895	170	G1"	AK 40-600-18	420	1950	250	G1½"
AK 06-800-10	128	1025	170	G1"	AK 50-600-18	481	2344	250	G1½"

BORE Ø 250 & Ø 360

part number	weight (kg)	A	ØB	G	part number	weight (kg)	A	ØB	G
AK 30-220-25	219	982	290	G1½"	AK 30-350-25	291	982	310	G1½"
AK 40-220-25	241	1185	290	G1½"	AK 40-350-25	330	1185	310	G1½"
AK 50-220-25	274	1390	290	G1½"	AK 50-350-25	376	1390	310	G1½"
AK 60-220-25	300	1590	290	G1½"	AK 60-350-25	419	1590	310	G1½"
AK 70-220-25	326	1795	290	G1½"	AK 70-350-25	461	1795	310	G1½"
AK 80-220-25	355	2000	290	G1½"	AK 80-350-25	503	2000	310	G1½"
AK 90-220-25	382	2202	290	G1½"	AK 90-350-25	546	2202	310	G1½"
AK 100-220-25	410	2405	290	G1½"	AK 100-350-25	589	2405	310	G1½"
AK 100-220-36	645	1565	405	G1½"	AK 100-350-36	860	1605	430	G1½"
AK 150-220-36	750	2055	405	G1½"	AK 150-350-36	995	2000	430	G1½"
AK 200-220-36	850	2545	405	G1½"	AK 200-350-36	1195	2585	430	G1½"
AK 250-220-36	958	3040	405	G1½"	AK 250-350-36	1365	3080	430	G1½"
AK 275-220-36	1010	3285	405	G1½"	AK 275-350-36	1450	3325	430	G1½"
AK 300-220-36	1060	3530	405	G1½"	AK 300-350-36	1615	3815	430	G1½"
AK 350-220-36	1165	4020	405	G1½"	AK 350-350-36	1700	4060	430	G1½"
AK 400-220-36	1270	4510	405	G1½"	AK 400-350-36	1865	4550	430	G1½"
AK 500-220-36	1480	5490	405	G1½"	AK 500-350-36	2115	5285	430	G1½"
AK 600-220-36	1690	6470	405	G1½"	AK 600-350-36	2365	6020	430	G1½"