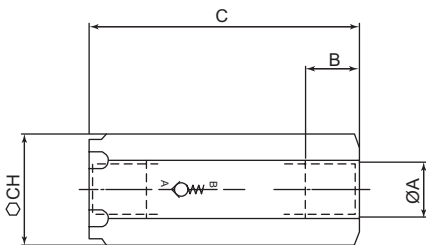


Ball Valves - Check Valves



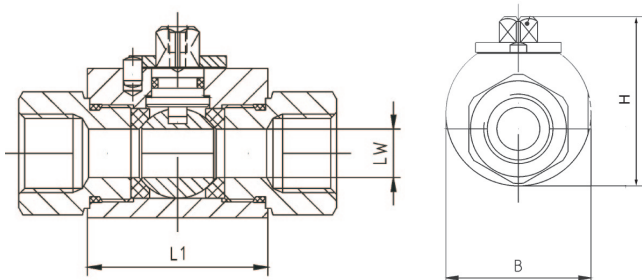
CHECK VALVES - OC SERIES NON RETURN VALVES



- Piston type check valves with cracking pressure of 0.35 bar (standard) and 2 bar. Bar type for smaller sizes
- Optional 4, 6, 8 & 10 bar cracking pressure valves available upon request
- Low pressure drop
- Metal to metal seat incorporating machined cone/spool with hardened tip
- Working pressure up to 400 bar
- Zinc plated finish
- Optional stainless steel available upon request

part number	type	Ø A (BSPP)	pressure (bar)	B	C	CH	mass (kg)
OC**-06-40	ball	¼	350	12.5	54	19	0.089
OC**-10-40	ball	3/8	350	13	65	24	0.175
OC**-13-40	ball	½	350	16	77	30	0.31
OC**-20-40	piston	¾	400	17	99.5	36	0.605
OC**-25-40	piston	1	400	20	117	46	1.17
OC**-32-40	piston	1¼	400	22	135	55	1.85
OC**-40-40	piston	1½	400	24	159	65	3.13
OC**-50-40	piston	2	400	27	198	75	4.9

STAINLESS STEEL ISOLATION VALVES - OB SERIES



- Stainless steel version to 35 Mpa
- Also available with pneumatic actuator
- Suitable for compressed gas using a special seal kit

part number	ØA (BSPP)	pressure (bar)	B	C	CH	mass (kg)
OB20-06-060SA-00-40	¼	400	35	43.5	36	0.35
OB20-10-100SA-00-40	3/8	400	42	49.5	43	0.5
OB20-13-130SA-00-40	½	400	45	52	48	0.65
OB20-20-200SA-00-40	¾	400	60	74	62	1.5
OB20-25-240SA-00-40	1	400	65	79	66	2
OB20-32-240SA-00-35	1¼	350	90	104	81	2.1
OB20-32-320SA-00-35	1¼	350	90	104	81	3.8
OB20-40-380SA-00-35	1½	350	83	111	85	6.1
OB20-50-480SA-00-35	2	350	100	130	100	9.1